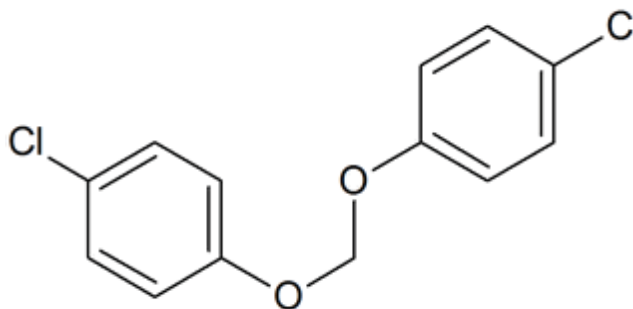


## Bis(4-Chlorophenoxy) Methane

Bis(p-Chlorophenoxy)Methane

### Physical Data

<b>Item Number:</b>	B536422
<b>CAS Number:</b>	555-89-5
<b>EC Number:</b>	209-107-9
<b>Formula:</b>	C13H10Cl2O2
<b>Formula Weight (g/ Mole):</b>	269.12
<b>Shape:</b>	Crystals
<b>Density (Gm/ CC):</b>	Not Available
<b>Melting Point (C):</b>	70.5
<b>Boiling Point (C):</b>	Not Available
<b>Flash Point (C):</b>	Not Available
<b>Viscosity (Centipoise):</b>	Not Available
<b>Surface Tension (Dynes/cm):</b>	Not Available
<b>Vapor Pressure:</b>	Not Available
<b>Optical Activity [α]<sub>D20</sub>:</b>	Not Available
<b>Shelf Life:</b>	3 Years



### Typical Analytical Data

Test	Specification
Description	Colorless or slight yellowish crystals, slightly soluble in water, soluble in ethanol, ether
Identification	Must fulfill specs.
Moisture	0.5 % Max
Ash	0.1 % Max
Assay	99 % Min

### Packages

Package Code	Package
B536422-25G	25 g
B536422-100G	100 g
B536422-250G	250 g

### Safety Data

<b>Hazard Statement(s):</b>	Not Available
<b>Precautionary statement(s):</b>	Not Available
<b>UN Number:</b>	Not Available

GHS Pictograms: